

PCC Delta N Series



Product Information

Manufacturer	PCC Compteurs
Short Code	PCC
Type	Rotary Displacement
Imp/ Metric	Imperial
Capacity	3500 ft ³ - 88,000 ft ³
Dials	7 / 8

Description:

Below is a list of positive displacement Rotary Meters by PC Compteurs

Metering Information

Meter Size	Index Capacity								Badged Capacity ft ³	To Read	ft ³
100/50	x	x	x	x	x	x	x	x	3500	8	1
200/80	x	x	x	x	x	x	x		8800	7	1
350/100	x	x	x	x	x	x	x	x	12,500	8	10
400/100	x	x	x	x	x	x	x		14,000	7	10
550/150	x	x	x	x	x	x	x		20,000	7	10
800/150	x	x	x	x	x	x	x		35,000	7	10
1600/200	x	x	x	x	x	x	x		56,000	7	10
2500/250	x	x	x	x	x	x	x		88,000	7	100
4000/300	x	x	x	x	x	x	x		100,000	7	100
6400/400	x	x	x	x	x	x	x		160,000	7	100

Serial Number Pattern:

nnnnnn, nnnnnn, nnnnnn - five, six or seven digit serial numbers

Useful Information:

All meter model data that needs to be collected is on an external badge.

PCC Delta Series



Product Information

Manufacturer	PCC Compteurs
Short Code	PCC
Type	Rotary Displacement
Imp/ Metric	Imperial
Capacity	3500 ft3 - 88,000 ft3
Dials	7 / 8

Description:

Below is a list of positive displacement Rotary Meters by PC Compteurs

Metering Information

Meter Size	Index Capacity								Badged Capacity ft3	To Read	ft3
G65	x	x	x	x	x	x	x	x	3500	8	1
G160	x	x	x	x	x	x	x		8800	8	1
G250	x	x	x	x	x	x	x		14,000	7	10
G400	x	x	x	x	x	x	x		20,000	7	10
G650	x	x	x	x	x	x	x		35,000	7	10
G1000	x	x	x	x	x	x	x		56,000	7	10
G1600	x	x	x	x	x	x	x		88,000	7	100

Serial Number Pattern:

nnnnn, nnnnn, nnnnnn - five, six or seven digit serial numbers

Useful Information:

All meter model data that needs to be collected is on an external badge.

Jeavons Quantometer



Product Information

Manufacturer	Jeavons
Short Code	JEA
Type	Turbine
Imp/ Metric	Imperial
Capacity	23000 ft ³ /h–140000 ft ³ /h
Dials	7 / 8

Description:

Quantometers are highly reliable gas meters which meet the highest standards. By using the quantometers in production and heating processes, it is possible to control flow of gas precisely and therefore optimise the use of energy.

Metering Information

Meter Size	Index Capacity								Badged Capacity ft ³	To Read	ft ³
Q400	x	x	x	x	x	x	x	x	23,000	8	10
Q650	x	x	x	x	x	x	x		35,000	7	100
Q1600	x	x	x	x	x	x	x	x	90,000	8	1
Q2500	x	x	x	x	x	x	x	x	140,000	8	10

Serial Number Pattern:

Nnnnnnnn–8 digit serial number

Useful Information:

- All meter model data that needs to be collected is on an external badge
- Normal width DN 50 – DN 500
- Pressure rates up to 100 bar
- Housing made of spheroidal graphite cast iron, cast steel or welded steel
- Suitable for outdoor installation
- Two low frequency pulsers standard
- Media: natural gas, methane, oxygen, city gas, non-aggressive gases

Dresser UK Ltd



Product Information

Model	Rotary Positive Displacement
Manufacturer	Dresser
Short Code	DR
Type	Rotary
Imp/ Metric	Imperial
Capacity	Varies
Dials	5 / 6

Description:

The Dresser Rotary Displacement Series has eleven different models, varying in dials and capacity size. The serial number is always seven digits and the first two represent the year the meter was manufactured.

E.G - msn YY NNNNN = 8312300. Year of meter 1983.

Below is table of all meters in the series with dials & capacity figures.

Meter Model	Index Capacity							Badged Capacity ft3	To Read	ft3
8C 125	x	x	x	x	x			800	5	100
1.5M 125	x	x	x	x	x			5600	5	100
3M 125	x	x	x	x	x			8800	5	100
5M 125	x	x	x	x	x			14,000	5	100
7M 125	x	x	x	x	x			20,000	5	100
11M 125	x	x	x	x	x			35,000	5	100
16M 125	x	x	x	x	x	x		56,000	6	100
23M 125	x	x	x	x	x	x		88,000	6	100
38M 125	x	x	x	x	x	x		35,000	6	100
56M 125	x	x	x	x	x	x		56,000	6	100
102M 125	x	x	x	x	x	x		88,000	6	100

Romet RM Series



Product Information

Manufacturer	Romet
Short Code	ROM
Type	Rotary Displacement
Imp/ Metric	Imperial
Capacity	1,000 ft ³ - 16,000 ft ³
Dials	7 / 8

Description:

The Romet Rotary Gas meter is a high-quality positive displacement roots-type gas meter that comes in a variety of styles and sizes. Rotary type gas meters allow for measurement of large amounts of gas in a very compact gas meter.

Metering Information

Meter Model	Index Capacity								Badged Capacity ft ³	To Read	ft ³
	x	x	x	x	x	x	x	x			
RM 1000	x	x	x	x	x	x	x	x	1000	8	1
RM 1500	x	x	x	x	x	x	x	x	1500	8	1
RM 2000	x	x	x	x	x	x	x	x	2000	8	1
RM 3000	x	x	x	x	x	x	x	x	3,000	8	1
RM 5000	x	x	x	x	x	x	x	x	5,000	8	1
RM 7000	x	x	x	x	x	x	x	x	7,000	8	1
RM 11000	x	x	x	x	x	x	x	x	11,000	8	1
RM 16000	x	x	x	x	x	x	x		16,000	7	100

Serial Number Pattern:

From no.891518 six digits—first two representing the year of manufacture. YNNNNN—6 digits

Useful Information:

All meter model data that needs to be collected is on an external badge.

Schlumberger / Parkinson Cowan



Product Information

Model	U16–U160
Manufacturer Short Code	Schlumberger SCH / PC
Type	Diaphragm
Imp/ Metric	Imperial
Capacity	550–5650
Dials	4 / 6

Description:

Actaris / Schlumberger U16–U160 are industrial metres that are commonly used by National Grid Metering and have been used since 1979.

Label Name/Colour:

U series meters all have a “Handle with Care” label. They are colour coded and always located on the top of the meter as shown. National Grid owned meters have red labels denoting that they are the property of National Grid Gas PLC (please note this only applies from 25.10.04, prior to that all labels were red). IDN meters have the name of the network on the label.



Serial Number Pattern:

The letters ‘S’ will be present on serial numbers of synthetic diaphragm meters. This should be recorded where present.

Useful Information:

PC: Year of manufacture pre 1979–Leather diaphragm. 1982 onwards- synthetic diaphragm, but some refurbished meters may be leather after 1982. 1980/81–either R5 pulse indexes may be added to refurbished meters.

SCH Synthetic diaphragm R5 Pulse indexes introduced between January and October 1991 for domestic and 1991/92 for non-domestic. There are 6 series of meters, as shown in the table

Meter Size	Index Capacity						Badged Capacity ft3	To Read	ft3
U16	X	X	X	X			550 OR 565	4	100
U25	X	X	X	X	X	X	883	6	100
U40	X	X	X	X	X	X	1412	6	100
U65	X	X	X	X	X	X	2296	6	100
U100	X	X	X	X	X	X	3511	6	100
U160	X	X	X	X	X	X	5650	6	100

Schlumberger Delta 2000 Series



Product Information

Model	D0.8–D16
Manufacturer	Schlumberger
Short Code	SCH
Type	Rotary Displacement
Imp/ Metric	Imperial
Capacity	800 ft ³ –16000 ft ³
Dials	8 or 9

Description:

Schlumberger Delta 2000 series have been in use since 1984. The Delta 2000 series are used when very accurate measurement is required in circumstances where the gas flow can be low or irregular. Because of its volumetric principle, the D series meter's metrology is not influenced by its installation conditions.

Serial Number Pattern:

CDnnnnnn or CDnnnnnnn - Is 8 or 9 digits long including CD at the beginning

Useful Information:

All Schlumberger Delta 2000 series meters are not purchased by any other MAM as they only range from 1984 to 2000. All Delta 2000 series meters are Imperial Rotary Meter which are approved for Fiscal use.



Meter Size	Index Capacity									Badged Capacity ft3	To Read	ft3
	x	x	x	x	x	x	x	x	x			
D0.8	x	x	x	x	x	x	x	x		800	8	1
D1.5	x	x	x	x	x	x	x	x		1500	8	1
D3	x	x	x	x	x	x	x	x	x	3000 or 3532	9	1
D5	x	x	x	x	x	x	x	x	x	5000 or 5650	9	1
D7	x	x	x	x	x	x	x	x	x	7000	9	1
D9	x	x	x	x	x	x	x	x	x	9000	9	10
D11	x	x	x	x	x	x	x	x	x	11,000	9	10
D16	x	x	x	x	x	x	x	x	x	16,000	9	10

PC Compteurs D Series



Product Information

Model	D3.5–D88
Manufacturer	PC Compteurs
Short Code	PCC
Type	Rotary Displacement
Imp/ Metric	Imperial
Capacity	3500 ft ³ –88000 ft ³
Dials	7 or 8

Description:

PC Compteurs D series have been in use since 1954. The D series are used when very accurate measurement is required in circumstances where the gas flow can be low or irregular. Because of its volumetric principle, the D series meters metrology is not influenced by its installation conditions.

Serial Number Pattern:

Nnnnn, nnnnnn and nnnnnnn - Is 5, 6 or 7 digits long



Useful Information:

All PC Compteurs D series meters are not purchased by any other MAM as they only range from 1954 to 2000. All D series meters are Imperial Rotary Meter which are approved for Fiscal use.

Meter Size	Index Capacity								Badged Capacity ft ³	To Read	ft ³
D3.5	x	x	x	x	x	x	x	x	3500	8	1
D5.6	x	x	x	x	x	x	x	x	5600	8	1
D8.8	x	x	x	x	x	x	x		8800	7	1
D14	x	x	x	x	x	x	x		14,000	7	10
D20	x	x	x	x	x	x	x		20,000	7	10
D35	x	x	x	x	x	x	x		35,000	7	10
D56	x	x	x	x	x	x	x		56,000	7	10
D88	x	x	x	x	x	x	x		88,000	7	100

Schlumberger Delta 1985 Series



Product Information

Model	D3–D88
Manufacturer	Schlumberger
Short Code	SCH
Type	Rotary Displacement
Imp/ Metric	Imperial
Capacity	3500 ft ³ –88000 ft ³
Dials	8

Description:

Schlumberger Delta 1985 series have been in use since 1984. The Delta 1985 series are used when very accurate measurement is required in circumstances where the gas flow can be low or irregular. Because of its volumetric principle, the D series meters metrology is not influenced by its installation conditions.

Serial Number Pattern:

CDnnnnn - Is 7 digits long including CD at the beginning

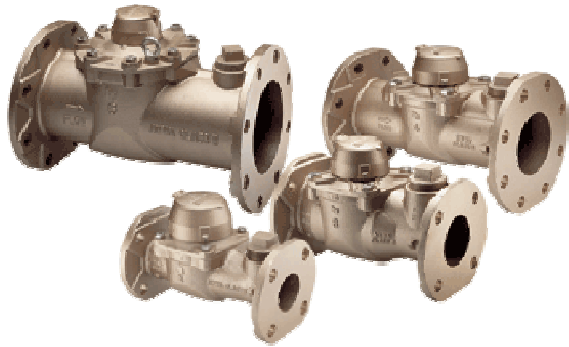


Useful Information:

All Schlumberger Delta 1985 series meters are not purchased by any other MAM as they only range from 1984 to 2000. All Delta 1985 series meters are Imperial Rotary Meter which are approved for Fiscal use.

Meter Size	Index Capacity								Badged Capacity ft ³	To Read	ft ³
D3	x	x	x	x	x	x	x	x	3530, 3500, 3000*	8	1
D5	x	x	x	x	x	x	x	x	5651, 5600, 5000*	8	1
D7	x	x	x	x	x	x	x	x	7000	8	1
D9	x	x	x	x	x	x	x	x	9000	8	1
D11	x	x	x	x	x	x	x	x	11,000	8	10
D14	x	x	x	x	x	x	x	x	14,000	8	10
D23	x	x	x	x	x	x	x	x	23,000	8	10
D35	x	x	x	x	x	x	x	x	35,000	8	10
D56	x	x	x	x	x	x	x	x	56,000	8	100
D88	x	x	x	x	x	x	x	x	88,000	8	100

Actaris TZ Series



Product Information

Manufacturer	Actaris
Short Code	ACT
Type	Turbine
Imp/ Metric	Metric
Capacity	160 m3 - 1600 m3
Dials	7 / 8

Description:

Suitable for natural gas and various filtered and non-corrosive gases and designed to measure medium to high gas flow at low, medium or high pressure. With accuracy exceeding standard requirements and low sensitivity to irregularities in the gas flow, these meters have been optimised for use in all applications connected with the transportation and distribution of gas. They are approved for fiscal use.

Meter Size	Index Capacity								Badged Capacity m3	To Read	m3
MTA160C	x	x	x	x	x	x	x	x	160	7	1
MTA250C	x	x	x	x	x	x	x	x	250	7	1
MTA250D	x	x	x	x	x	x	x	x	250	7	1
MTA400C	x	x	x	x	x	x	x	x	400	7	1
MTA400D	x	x	x	x	x	x	x	x	400	7	1
MTA650D	x	x	x	x	x	x	x	x	650	7	1
MTA650E	x	x	x	x	x	x	x	x	650	7	1
MTA1000E	x	x	x	x	x	x	x	x	1000	7	1
MTA1000F	x	x	x	x	x	x	x	x	1000	8	1
MTA1000G	x	x	x	x	x	x	x	x	1000	8	1
MTA1600E	x	x	x	x	x	x	x	x	1600	7	1
MTA1600F	x	x	x	x	x	x	x	x	1600	8	1

Serial Number Pattern:

MTA series format = M00160AXXX01Z7 (where M = metric. 00160 is capacity size, 01 is year of manufacture, Z refers to TZ meter and the final digit is the number of dials to read).

Useful Information:

All meter model data that needs to be collected is on an external badge.

Actaris / Schlumberger



Product Information

Manufacturer	Actaris / Schlumberger
Short Code	ACT / SCH
Type	Diaphragm
Imp/ Metric	Metric
Capacity	16 / 160
Dials	6 / 7

Description:

Actaris / Schlumberger MDA16–MDA160 are industrial meters that are commonly used by National Grid Metering and have been used since 2000. Any meter under 2003 would be manufactured by Schlumberger and any above 2003 would be by Actaris.

Metering Information

Meter Size	Index Capacity							Badged Capacity ft3		To Read	ft3
	x	x	x	x	x	x					
MDA16	x	x	x	x	x	x		16	6	1	
MDA25	x	x	x	x	x	x		25	6	1	
MDA40	x	x	x	x	x	x		40	6	1	
MDA65	x	x	x	x	x	x		65	6	1	
MDA100	x	x	x	x	x	x		100	6	1	
MDA160	x	x	x	x	x	x	x	160	7	1	

Serial Number Pattern:

M016AXXXXX01A6 or M016AXXXXX01D6 (016 is capacity size, 01 is year of manufacture and the final digit is the number of dials) - Always 14 digits long.



Label Name/Colour:

Actaris Diaphragm series meters all have a “Handle with Care” label. They are colour coded and always located on the top of the meter as shown. National Grid owned meters have red labels denoting that they are the property of National Grid Gas PLC (please note this only applies from 25.10.04, prior to that all labels were red). IDN meters have the name of the network on the label.

Useful Information:

Models manufactured from 2009 onwards may end in D6 not just A6